

Product datasheet

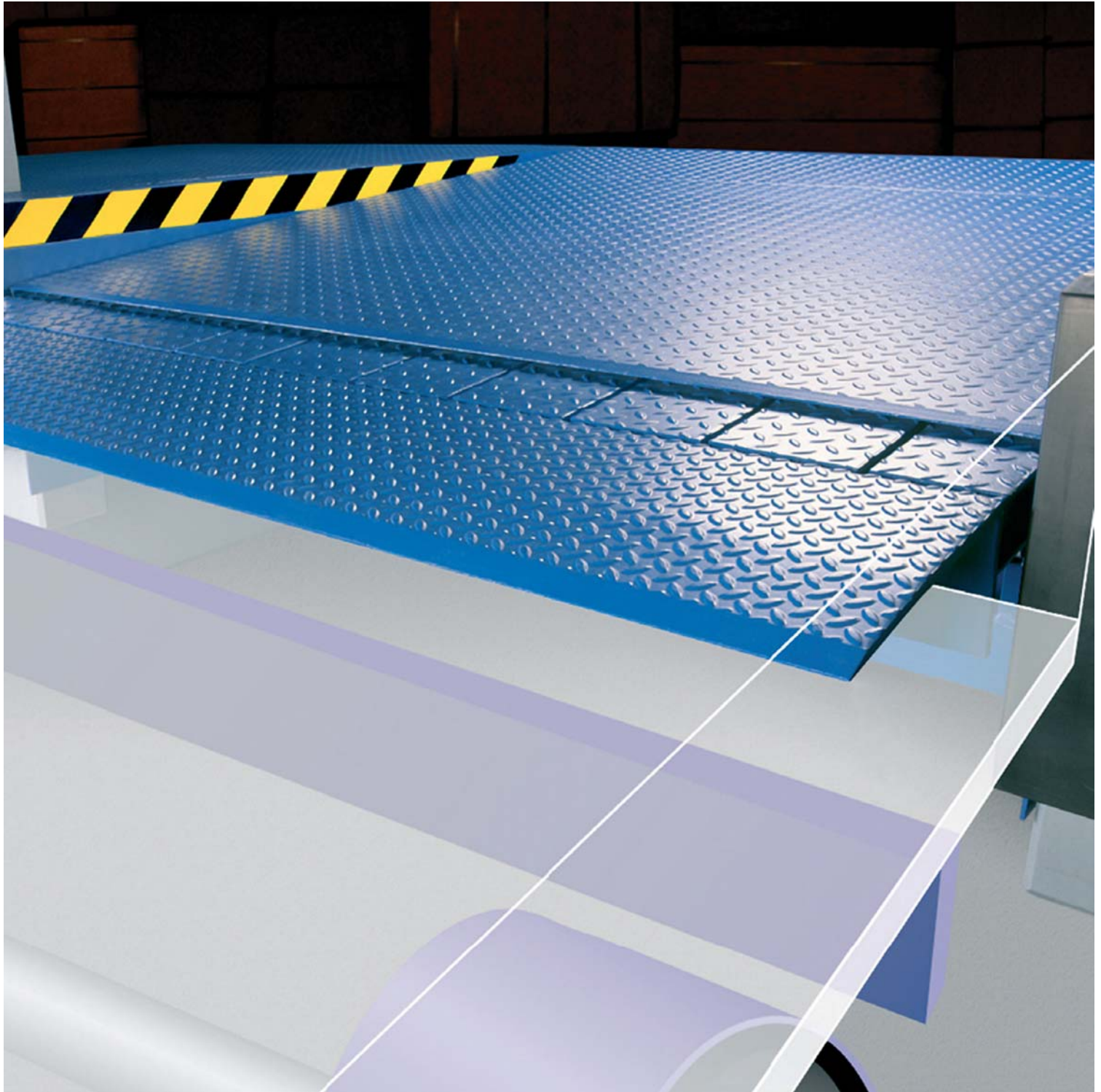
Dock leveler

ASSA ABLOY DL6120T

ASSA ABLOY

ASSA ABLOY Entrance Systems

The global leader in
door opening solutions



Copyright and Disclaimer Notice

Although the contents of this publication have been compiled with the greatest possible care, ASSA ABLOY Entrance Systems cannot accept liability for any damage that might arise from errors or omissions in this publication. We also reserve the right to make appropriate technical modifications/replacements without prior notice.

No rights can be derived from the contents of this document.

Color guides: Color differences may occur due to different printing and publication methods.

No part of this publication may be copied or published by means of scanning, printing, photocopying, microfilm or any other process whatsoever without prior permission in writing by ASSA ABLOY Entrance Systems.

Copyright © ASSA ABLOY Entrance Systems AB 2006-2018.

All rights reserved.

ASSA ABLOY, Besam, Crawford, Albany and Megadoor as words and logo are trademarks belonging to the ASSA ABLOY Group

Technical facts

Features

Sizes - leveler height	600, 700, 800, 900 mm	
Sizes - nominal length*	2000, 2500, 3000, 3500, 4000, 4500 mm	
Sizes - nominal width	1750, 2000, 2200, 2250 mm	
Vertical working range	Above dock:	0 - 660 mm
	Below dock:	0 - 440 mm
Platform tear plate	8 mm (8/10)	
Surface treatment	Standard:	RAL 5010 RAL 9005
	Option:	RAL 6005 RAL 3002 Hot dip galvanised
Control unit	Leveler control Door control Shelter control Fault & service indicator	

* Other sizes are available on request

Performance

Load capacity	6 tonnes (60kN)
Max. point load	6,5 N / mm ² (8 mm tear plate)
Motor hydraulic unit	1,5kW
Mains supply	400V 3-phase, 230V 3-phase
Control unit protection class	IP54
Allowable oil types	ASSA ABLOY standard hydraulic oil (-20°C - +60°C) ASSA ABLOY low temperature hydraulic oil (-30°C - +60°C) ASSA ABLOY bio hydraulic oil (-20°C - +60°C)
Magnetic valves	24V/DC 18W S1
Surface treatment paint class 1	80 µm Corrosive Category C2 M acc. DIN EN ISO 12944-2
Surface treatment paint class 3	160 µm Corrosive Category C3 M acc. DIN EN ISO 12944-2
Surface treatment galvanised	Hot dip galvanised 80 µm Corrosive category C4 & C5-I M acc. DIN EN ISO 12944-2

Contents

Copyright and Disclaimer Notice	2
Technical facts	3
Contents	4
1. Description	6
1.1 General	6
1.1.1 Application	6
1.1.2 Mode of operation	6
1.1.3 Overview	6
1.1.4 Standard	6
1.1.5 Options	6
1.2 Telescopic Lip	7
1.2.1 Lip material	7
1.2.2 Lip type	7
1.2.3 Lip shapes	7
1.2.4 Bevelled lip	7
1.3 Platform	8
1.3.1 Platform tear-plate thickness	8
1.3.2 EPDM seal	8
1.3.3 Front cover curtain	8
1.3.4 Slip protection / noise reduction	8
1.4 Surface	8
1.4.1 Painting	8
1.4.2 Hot galvanising	8
1.5 Frames - connection to building	9
1.5.1 T - leveler frame for embedding in concrete	9
1.5.2 T - 200 leveler frame for embedding in concrete	9
1.5.3 W - leveler frame for welding	9
1.5.4 F - flat frame for welding	9
1.5.5 P - pit frame for welding	10
1.5.6 B - box-frame	10
1.6 Docking control systems	11
1.6.1 950 Docking LA TD	11
1.6.2 950 Docking DLA TD	11
1.6.3 950 Docking LSA TD	11
1.6.4 950 Docking DLSA TD	11
1.7 Equipment	12
1.7.1 Buffers	12
1.7.2 ASSA ABLOY DE6090E Eye	13
1.7.3 ASSA ABLOY DE6090WC Wheel chock	13
1.7.4 ASSA ABLOY DE6090TLS Traffic light system	13
1.7.5 ASSA ABLOY DE6090DL Dock light Heavy Duty LED	13
1.7.6 Parking guides	13
1.7.7 ASSA ABLOY DE6090DI Dock-IN Autodock	14

2.	Selection guide	15
2.1	Load capacity according to EN 1398	15
2.1.1	Rated load	15
2.1.2	Axle load	15
2.1.3	Dynamic load	15
2.2	Select the load capacity	15
2.2.1	Example	15
2.3	Select the leveler length	15
2.3.1	The calculation	15
2.3.2	Example	15
2.4	Nominal width.....	16
2.5	Free space under lip.....	16
2.5.1	Steel lip.....	16
2.5.2	Aluminium lip	16
3.	Specifications	17
3.1	Dimensions.....	17
3.2	Platform thickness.....	17
3.3	Control units	18
3.3.1	Dimensions.....	18
3.3.2	Functions	18
4.	CEN Performance	19
4.1	Safety according to the European Standard EN 1398	19
5.	Building and space requirements	20
5.1	Electrical preparations.....	20
5.2	Pit preparations.....	21
5.2.1	T - frame + T-frame 200.....	21
5.2.2	W - frame	21
5.2.3	F - frame	22
5.2.4	P - frame	22
5.2.5	B - frame.....	23
6.	Service	24
	Index	25

1. Description

1.1 General

1.1.1 Application

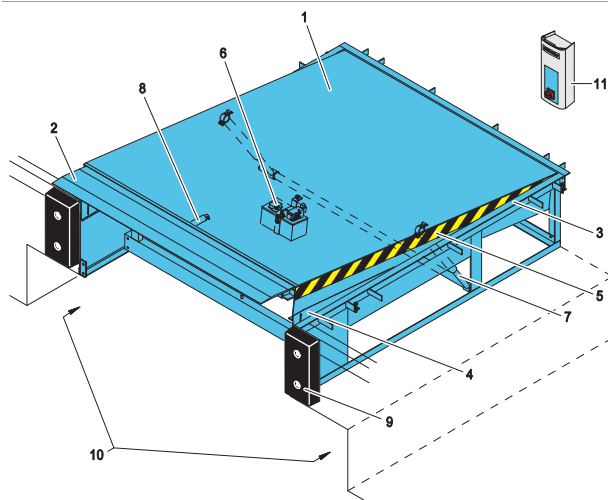
The ASSA ABLOY DL6120T teledock is the optimal efficiency solution in general industry and logistics applications. The telescopic lip precisely bridges the gap between the ramp and the lorry bed. The ASSA ABLOY DL6120T teledock system meets the standard demands of most loading operations and fully complies with rules and regulations of the European Standard EN 1398.

1.1.2 Mode of operation

The operation of the ASSA ABLOY DL6120T teledock is based on an electro-hydraulic telescopic lip, controlled by a semi-automatic control unit.

When the dock leveler is raised, the lip extends and the leveler lowers gently onto the lorry bed. After loading or unloading, the leveler is raised again, the lip retracts and the platform returns to its parking position, i.e. to ramp level.

1.1.3 Overview



- 1) Leveler platform
- 2) Telescopic lip
- 3) Leveler frame
- 4) Toe guard
- 5) Warning stripes
- 6) Hydraulic Unit
- 7) Lift cylinders
- 8) Telescopic lip cylinder
- 9) Buffers (option)
- 10) Tail lift recess
- 11) Control unit

1.1.4 Standard

Frames - connection to building:	P-frame [pit-frame]
Surface	Painting RAL 5010 or RAL 9005
Hydraulic Equipment	Low noise hydraulic unit Two hydraulic lift cylinders One hydraulic lip cylinder
Lip	Steel lip Bevelled 40 mm Lip length 500 mm

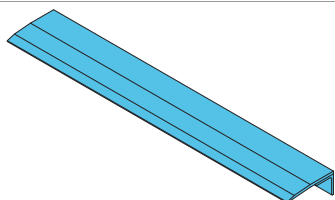
1.1.5 Options

Frames - connection to building	T-200 frame W-frame [frame for welding] F-frame [flat frame for welding] P-frame [pit-frame, max NL=3000] B-frame [box-frame]
Surface	Painting RAL 3002, RAL 6005 Hot dip galvanised
Hydraulic equipment	Low temperature oil Bio oil
Lip options	Lip length 1000 mm Lip length 345 mm - Ergonomic lip Steel lip bevelled, 40 mm Aluminium lip 2 retracting tongues Tapered lip
Energy & ergonomics	EPDM seal Front cover curtain Slip protection/noise reduction

1.2 Telescopic Lip

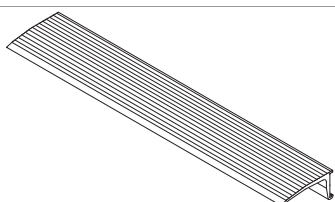
1.2.1 Lip material

1.2.1.1 Steel telescopic lip



The steel telescopic lip is designed for use by heavy loading equipment. It has a high durability, while it provides medium comfort.

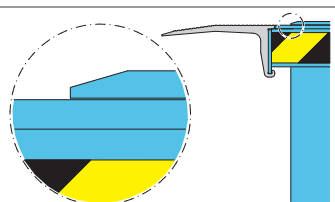
1.2.1.2 Aluminium telescopic lip



The aluminium telescopic lip is designed to provide maximum comfort to low load-weight loading equipment.

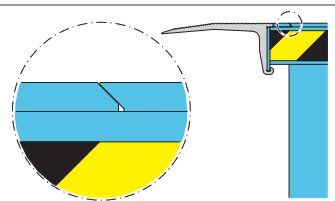
1.2.2 Lip type

1.2.2.1 Standard lip



When the standard lip is extended there is always a bump from the lip to the platform of the leveler
The length of the lip is 500 mm or 1000 mm.

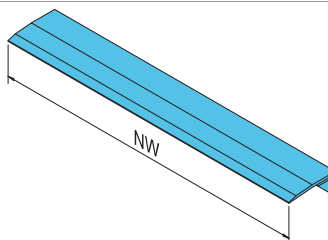
1.2.2.2 Ergonomic lip



When the ergonomic lip is fully extended it is on the same level line as the leveler platform, Due to the smooth bump free passage shock loads are reduced.
Maximal buffer depth is 100mm.
The length of the lip is 345 mm.

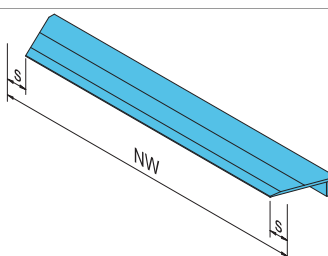
1.2.3 Lip shapes

1.2.3.1 Standard telescopic lip



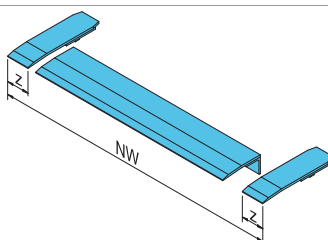
The standard telescopic lip is a single rectangular lip for use with a fleet of vehicles that is a standard size.

1.2.3.2 Tapered telescopic lip



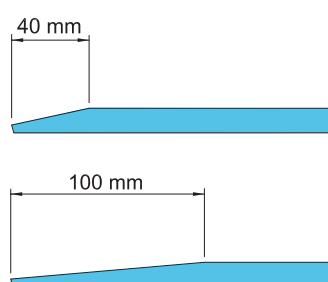
A tapered telescopic lip ensures that the lip reaches the lorry bed, even when the lorry is not parked in the exact centre position. Avoids damage to the truck and interruptions of the dock-in procedure.
 $s = 100 \text{ mm}$

1.2.3.3 2 retracting tongues



For applications with vehicles of different widths, the telescopic lip can be provided with 2 retracting tongues. On each side a 140 mm wide segment is pushed inside when a smaller vehicle docks.

1.2.4 Bevelled lip



The standard steel lip is 40 mm bevelled. Optionally, the lip can be bevelled 100 mm, designed to provide maximum comfort and smooth transition from the lip.

1.3 Platform

1.3.1 Platform tear-plate thickness

The 8 mm (8/10) tear-plate is designed for loading and unloading with typical 4 wheel pneumatic-tired fork-lift trucks, and is also suitable for handling equipment with high point loads, such as electric pallet trucks.

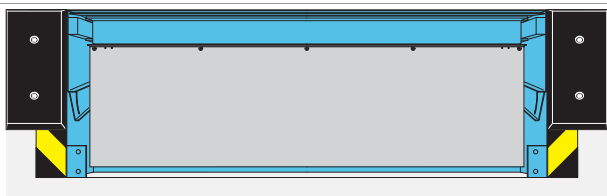
1.3.2 EPDM seal

To seal the gap between leveler and pit, an EPDM seal can be factory-installed between the flexible platform and frame. By reducing draughts into the building, working conditions improve and energy savings increase.



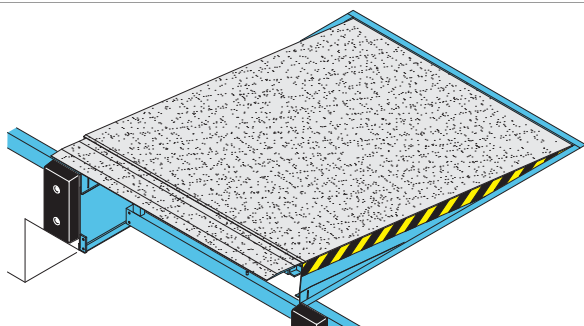
1.3.3 Front cover curtain

A PVC front cover curtain on the platform prevents draught and dirt under the leveler.



1.3.4 Slip protection / noise reduction

Applying a polyurethane slip protection coating on the lip and platform ensures a durable non-slip and noise reduction surface. The effect is a smooth and comfortable surface for handling equipment that is less receptive to wear and tear. The PU coating material is resistant to impact, to thermal impact and most types of chemicals and it has a high loading capacity.

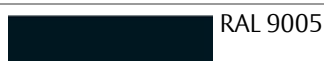


1.4 Surface

1.4.1 Painting

1.4.1.1 Colors

The dock leveler standard finish is painted. The standard colors are :



Colors available as option are:



1.4.1.2 Standard paint class

If the dock leveler is to be used in a rural area, the standard finish is:

- Paint class 1; 80 μ m factory painted for corrosive category C2 M

1.4.1.3 Paint classes

If the dock leveler is to be used in an urban or industrial atmosphere, or in a coastal area, it may be appropriate to select an alternative paint class with increased resistance to corrosion C3 M.

- Paint class 3; 160 μ m factory painted for corrosive category C3 M

1.4.2 Hot galvanising

To increase corrosion protection to C4 for saline coastal areas or C5-I for aggressive or humid atmospheres, the dock leveler can be delivered with hot dip galvanised (80 μ m) steel parts.

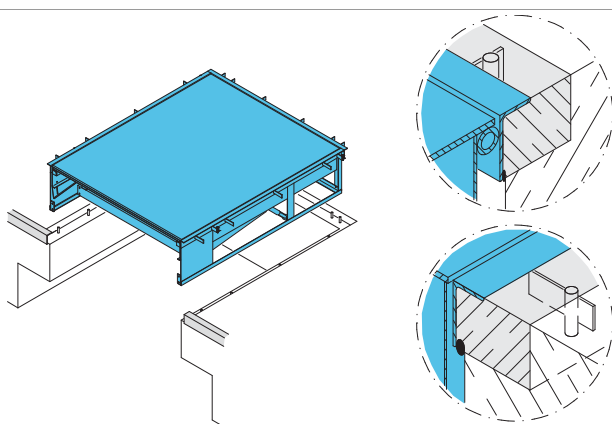
1.5 Frames - connection to building

The frame is the leveler's connection point to the building and a rigid support for the leveler.

The ASSA ABLOY DL6120T teledock is available with different frame types. The frame can be embedded in concrete or installed via screws or welding. All frames are illustrated with the tail lift recess. The levelers are also available without tail lift recess.

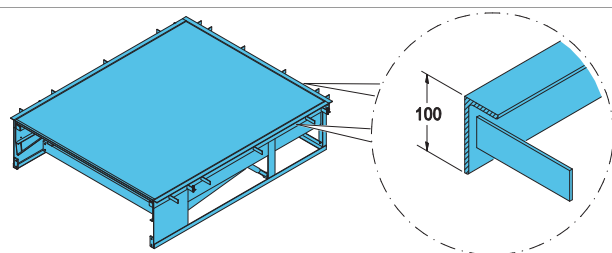
1.5.1 T - leveler frame for embedding in concrete

The T-frame is installed in one step. The leveler is directly embedded in concrete.

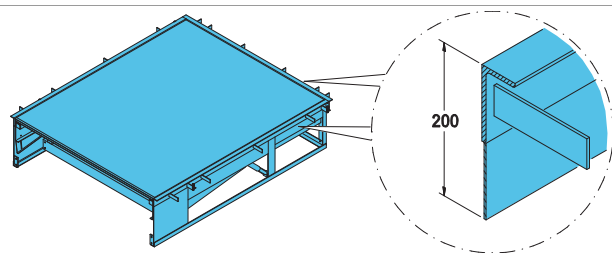


1.5.2 T - 200 leveler frame for embedding in concrete

The rear vertical part of the T-200 frame is prolonged from 100 mm to 200 mm to improve the situation during the process of pouring the concrete to finish floor level in the building, when the dock edge gap of the concrete pit is not fully in line with out pit drawing.



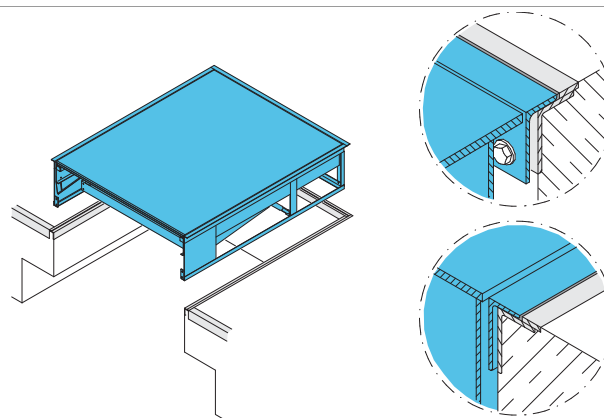
T-frame (standard) 100 mm



T-frame (standard) 200 mm

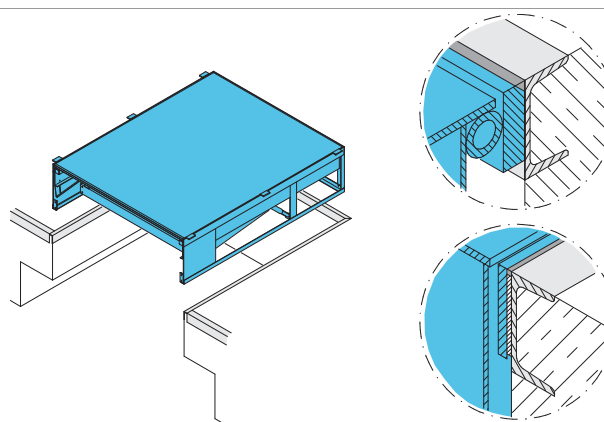
1.5.3 W - leveler frame for welding

The W-frame is designed to weld the leveler directly to the floor slab. In case of future replacement, the welding points can be ground away.



1.5.4 F - flat frame for welding

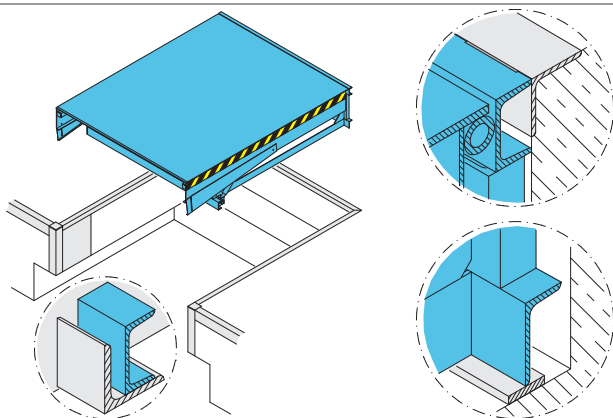
The F-frame is designed to weld the leveler directly to the floor slab. In case of future replacement, the welding points can be ground away.



1.5.5 P - pit frame for welding

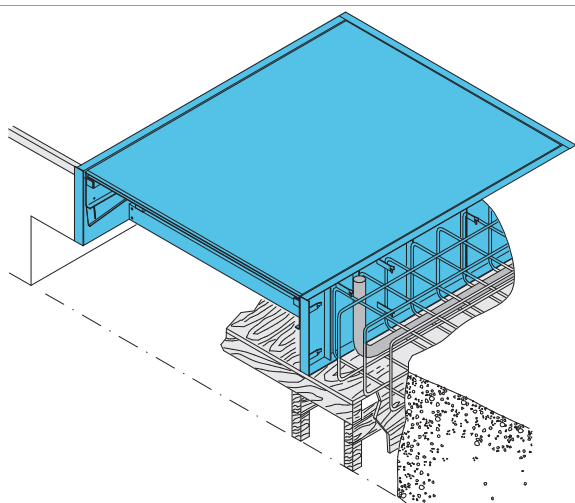
The P-frame leveler is designed to rest on a sturdy concrete slab at the rear of the pit. The rest of the leveler is welded to the pit edges. This leads to fast installation and replacement.

NL 2000-3000



1.5.6 B - box-frame

The B-frame is designed to function as the concrete shutter. Therefore complicated and expensive shutter work is not required.



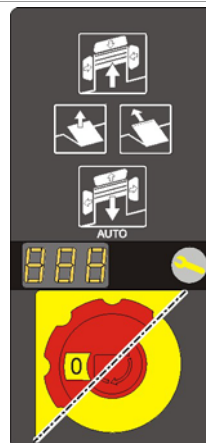
1.6 Docking control systems

1.6.1 950 Docking LA TD



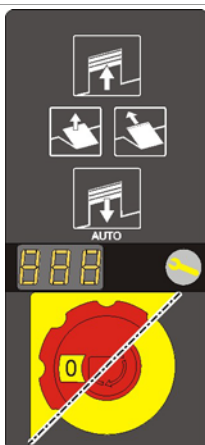
- Hold-to-run button to lift platform.
- Hold-to-run button to position the lip on the truck bed.
- Impulse auto button to put the leveler back in parking position.
- Mains isolator or emergency stop button.
- Interface to incorporate ASSA ABLOY Eye and/or wheel chock.

1.6.4 950 Docking DLSA TD



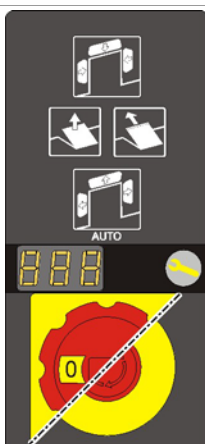
- Hold-to-run button to lift platform.
- Hold-to-run button to position the lip on the truck bed.
- Impulse auto button to put the leveler back in parking position.
- Mains isolator or emergency stop button.
- Interface to incorporate ASSA ABLOY Eye and/or wheel chock.
- Designed to operate an overhead sectional door and an inflatable shelter in the docking station.

1.6.2 950 Docking DLA TD



- Hold-to-run button to lift platform.
- Hold-to-run button to position the lip on the truck bed.
- Impulse auto button to put the leveler back in parking position.
- Mains isolator or emergency stop button.
- Interface to incorporate ASSA ABLOY Eye and/or wheel chock.
- Designed to operate an overhead sectional door in the docking station.

1.6.3 950 Docking LSA TD



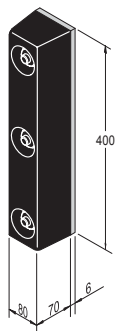
- Hold-to-run button to lift platform.
- Hold-to-run button to position the lip on the truck bed.
- Impulse auto button to put the leveler back in parking position.
- Mains isolator or emergency stop button.
- Interface to incorporate ASSA ABLOY Eye and/or wheel chock.
- Designed to operate an inflatable shelter in the docking station.

1.7 Equipment

1.7.1 Buffers

Buffers placed in front of the dock leveler absorb the energy of a vehicle that accidentally or intentionally hits the building. Buffers are available in various sizes, in fixed or moving models, and with rubber finishing or steel plate and spring function.

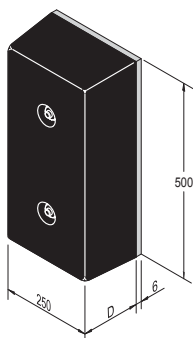
1.7.1.1 RS



Application

The RS buffer is the economical solution for docking stations where vehicles of equal sizes load and unload.

1.7.1.2 RB



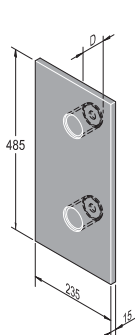
Application

The RB buffer is a large fixed rubber. It is the universal building and vehicle protection solution.

Available depths:

- 90 mm
- 140 mm

1.7.1.3 RB with steel front plate



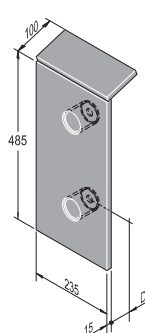
Application

The RB buffer with steel protection front plate increases the building protection and the buffer service life.

Available depths:

- 90 mm
- 140 mm

1.7.1.4 RB with steel front and top plate



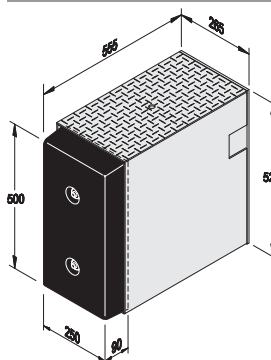
Application

The RB buffer with steel protection front and top plate is designed for vehicles with high lorry beds like interchangeable open bodies and containers.

Available depths:

- 90 mm
- 140 mm

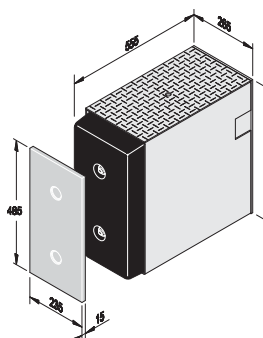
1.7.1.5 RB with steel construction



Application

The RB buffer with steel construction is designed to create a security gap between your dock leveler with 1000mm telescopic lip and the truck.

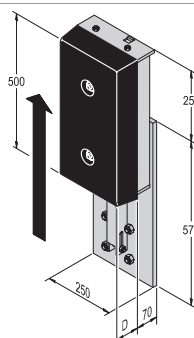
1.7.1.6 RB with steel construction and steel front plate



Application

The RB buffer with steel construction is designed to create a security gap between your dock leveler with 1000mm telescopic lip and the truck. The steel protection front plate increases the building protection and the buffer service life.

1.7.1.7 EBH



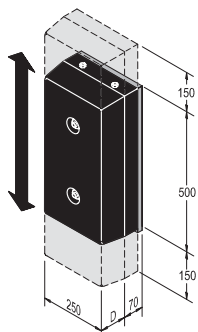
Application

The EBH buffer is the ideal solution for docking stations where vehicles of notable height differences load and unload. This buffer can be vertically adjusted by a 'release device'.

Available depths:

- 90 mm
- 140 mm

1.7.1.8 EBF



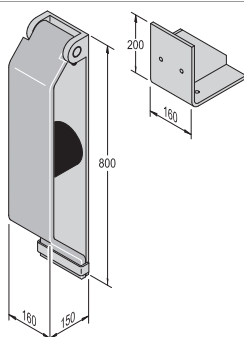
Application

The EBF buffer is the ideal solution for docking stations where vehicles are expected to make notable vertical suspension changes when loading or unloading. This buffer follows vertical movements of the vehicle.

Available depths:

- 90 mm
- 140 mm

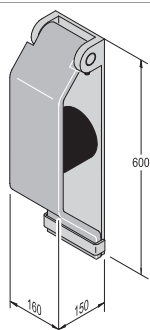
1.7.1.9 Steel spring buffer 800



Application

The 800 mm steel spring buffer is designed for applications where vehicles generally are higher than ramp level.

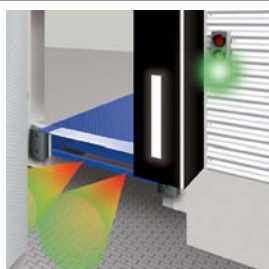
1.7.1.10 Steel spring buffer 600



Application

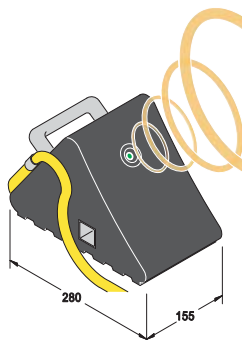
The steel spring buffer is the ideal protector of the ramp as well as the vehicle itself.

1.7.2 ASSA ABLOY DE6090E Eye



The ASSA ABLOY Eye is an electronic, sensor-based dock-in system, which measures the distance between the vehicle and the building. This makes it easier for the driver to complete the dock-in procedure, but also detects objects or people behind the vehicle.

1.7.3 ASSA ABLOY DE6090WC Wheel chock



The wheel chock has a sensor to detect the presence and position of the vehicle and is connected to the dock leveler control panel. If no vehicle is detected, the docking station is blocked for safety reasons. Furthermore, the wheel chock prevents the vehicle from moving during loading/unloading.

1.7.4 ASSA ABLOY DE6090TLS Traffic light system

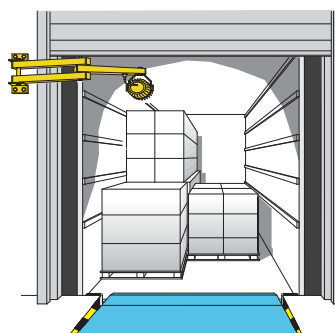


The traffic light system either has a sensor above the dock leveler that measures the presence of the vehicle or it is a wheel chock that detects the vehicle.

If there is no vehicle (dock leveler is free), the traffic light inside is red, outside is green.

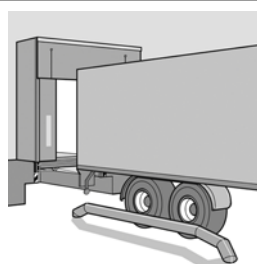
The traffic light can also be combined with a wheel chock, ASSA ABLOY Eye or door/leveler interlocking.

1.7.5 ASSA ABLOY DE6090DL Dock light Heavy Duty LED



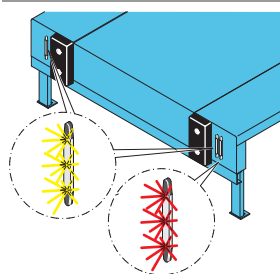
Where dock lights are often a vulnerable object in the docking area, the virtually indestructible Dock Light Heavy Duty LED is the perfect solution to bring light in the truck and docking area. It is designed for the most demanding environments and can withstand possible hard hits from a moving forklift without being damaged.

1.7.6 Parking guides



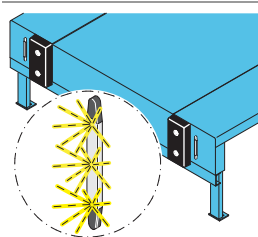
This visual aid makes it easier to park the vehicle and reduces the risk of collision. Especially advantageous for docking stations with wide leveler lips and cushion shelters. Parking guides can be bolted or cast in concrete on the floor before the leveler.

1.7.7 ASSA ABLOY DE6090DI Dock-IN Autodock



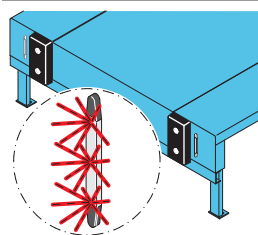
ASSA ABLOY Dock-IN offers a complete line of guide- and traffic lights that align the truck with the docking bay to make the dock-in procedure easy and safe. ASSA ABLOY Dock-IN is based on modern LED technology and stands for high reliability and low energy consumption.

1.7.7.1 Dock-IN White



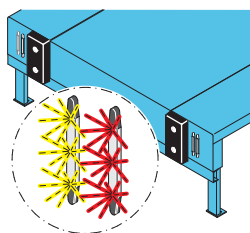
ASSA ABLOY Dock-IN White consists of two white LED light bars. It is designed to help guide a truck to the dock. ASSA ABLOY Dock-IN White offers much more visual aid than white stripes on the shelter or asphalt. Mounted on the wall they are always clearly visible, less exposed to wear and tear and not hidden by dirt and snow!

1.7.7.2 Dock-IN Red



ASSA ABLOY Dock-IN Red is a traffic light system consisting of one red LED light bar, a sensor for truck detection and a traffic light control box. The sensor detects the truck when it is in the right position, very close to the dock. The red LED turns ON to give the signal to the truck driver to break and let the truck roll against the buffer at the lowest speed, without the risk of damage. The system includes interlocking of the loading bay control box functions which are only released when the truck is in place and the red LED is ON.

1.7.7.3 Dock-IN White & Red



ASSA ABLOY Dock-IN White & Red is the optimum combination of both systems for easy and safe docking. The white LEDs provide the visual target and the red LED positions the truck at the right distance to the dock. The white guiding LEDs turn off when the truck is detected and at the same time the red LED turns ON. ASSA ABLOY Dock-IN White & Red guide the truck driver in the best possible way for an easy and safe docking.

1.7.7.4 Available Options

- Indication Light Inside, built into the 950 control box
A Green LED light on the control box to indicate that the control box functions are released. The operator of the loading bay equipment knows exactly when he can start loading or unloading. The green LED light will help to save energy and to control the complete loading process.

- Second Red LED

A second Red LED bar can be added to have the red LED traffic light on both sides of the docking bay. This is an option for terminals with left and right hand drive international trucks.

- Wheel chock connection

To increase the safety it is possible to connect the ASSA ABLOY wheel chock to the traffic light function ASSA ABLOY Dock-IN Red or ASSA ABLOY Dock-IN White and Red. The control box will be interlocked until the truck is detected and the wheel chock is in place.

Note:

Make sure the LED bars will not be covered by the Dock shelter.

Lowest possible truck is max. 2000 mm below the sensor position.

2. Selection guide

2.1 Load capacity according to EN 1398

The EN 1398 describes 3 key definitions about loads.

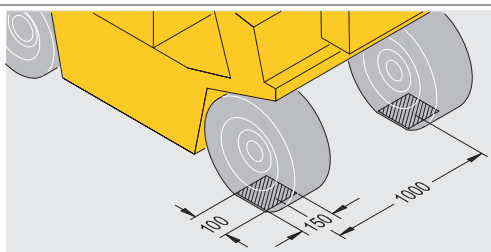
2.1.1 Rated load

The rated load is the total weight of the goods, the forklift truck and the driver.



2.1.2 Axle load

Axle loads shall be taken acting over two rectangular contact areas at 1 m lateral distance. These areas shall only apply if the actual conditions do not call for more severe loading. The size of the footprint [mm²] is derived from the wheel load [N] divided by 2 [N/mm²]. The ratio of the rectangular print is W:L = 3:2.



In the drawing measures for a leveler with a load capacity of 100kN or 150kN are shown.

2.1.3 Dynamic load

The dynamic load is the movement of the rated load and is the pressure on the leveler platform caused by the moving forklift truck.



2.2 Select the load capacity

The load capacity of a dock leveler must always be higher than the rated load.

2.2.1 Example

Weight of forklift truck	3600 kg
Weight of goods	1500 kg
Weight of driver	100 kg
Total weight/rated load	5200 kg
Suitable load capacity of the leveler	6000 kg/60kN

The 6 tonnes (60kN) DL6120T teledock is as a standard equipped with a tear plate of 8 mm (8/10).

2.3 Select the leveler length

When determining the leveler length, measure the maximum height difference between the truck bed and the dock level. Next, determine which vehicles will be used and lookup the maximum gradient the vehicles are allowed to be used on.

Vehicle	Max gradient
Roll cage	3%
Hand pallet truck	3%
Electric pallet truck	7%
Forklift truck (battery)	10%
Forklift truck (gas / petrol)	15%

2.3.1 The calculation

Minimal leveler length = height difference / gradient (%)

2.3.2 Example

Vehicle:	Electric pallet truck (max 7% gradient)
Truck height:	1350 – 1000 mm
Dock height:	1150 mm

The difference between Truck height and Dock height = 175 mm

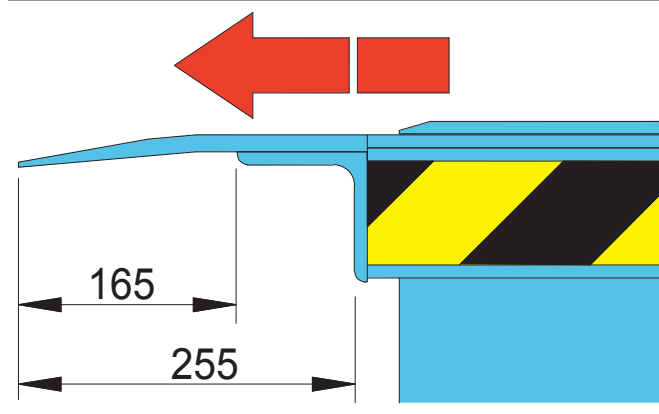
175 mm / 7% = 2500 mm leveler length

2.4 Nominal width

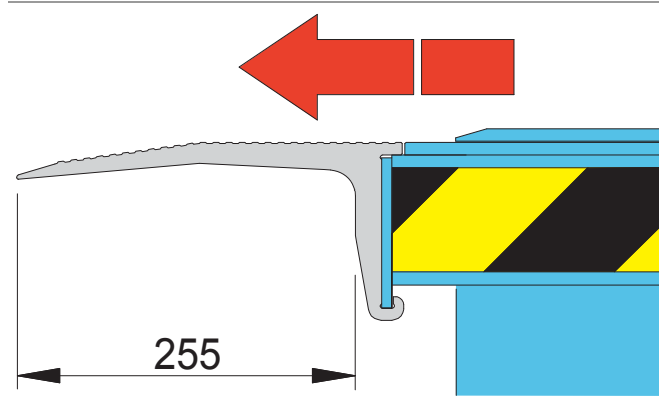
The ASSA ABLOY DL6120T teledock is available with a nominal width of 1750, 2000, 2200 or 2250 mm . The correct nominal width must exceed the widest loading vehicle by at least 700 mm.

2.5 Free space under lip

2.5.1 Steel lip

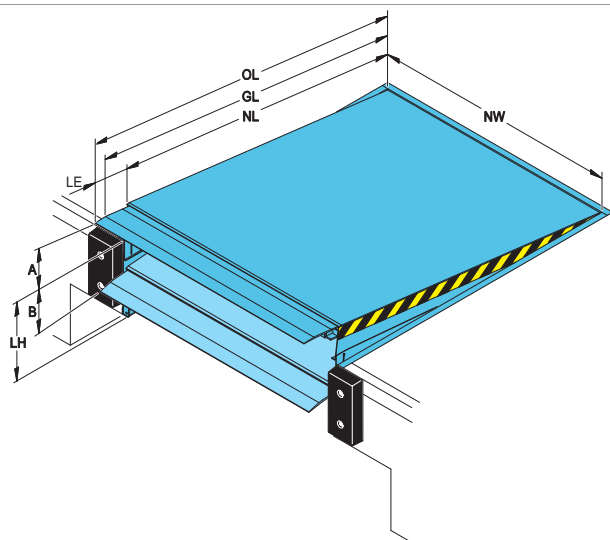


2.5.2 Aluminium lip



3. Specifications

3.1 Dimensions



NL	Nominal length
OL	Overall length
GL	Gradient length
NW	Nominal width
LE	Lip extension
LH	Leveler height
A	Working range above dock level
B	Working range below dock level

Dimensions				Vertical working range			
60 kN							
				LE 500 mm	LE 1000 mm	LE 345 mm	
NL	LH	A	B	A	B	A	B
2000	600	310	310	380	370	270	280
	700	340	400	420	470	310	360
2500	600	420	260	500	290	380	225
	700	430	370	510	420	400	340
3000	600	370	230	430	250	350	210
	800	450	400	520	440	420	360
3500	800	520	400	600	440	490	360
4000	900	590	400	660	440	560	380
4500	900	570	410	640	440	550	380

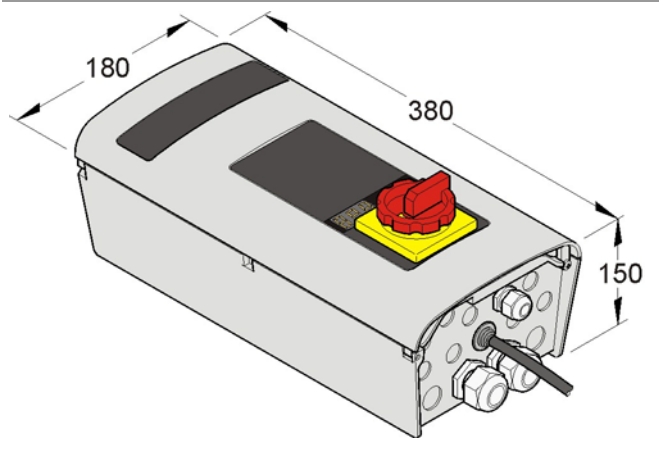
Nominal width (NW) 1750, 2000, 2200, 2250mm for all sizes.

3.2 Platform thickness

Thickness	Max. point load
8 mm (8/10)	6,5 N / mm ²





3.3 Control units

3.3.1 Dimensions



950 Series

3.3.2 Functions

Functions included	LA-TD	DSA-TD	LSA-TD	DLSA-TD
				
Hold to run button	■	■	■	■
Close (hold to run)	■	■	■	■
Impulse auto button	■	■	■	■
Extend lip (hold to run)	■	■	■	■
Mains isolator	■	■	■	■
Emergency stop button	□	□	□	□
400V	■	■	■	■
230V	□	□	□	
Maintenance indicator	■	■	■	■
3 Digit display	■	■	■	■
Memory function	■	■	■	■
BUS network interface	□	□	□	□
ASSA ABLOY eye	□	□	□	□
Wheel chock	□	□	□	□
Door control		■		■
Shelter control			■	■

- Standard
□ Option / Available

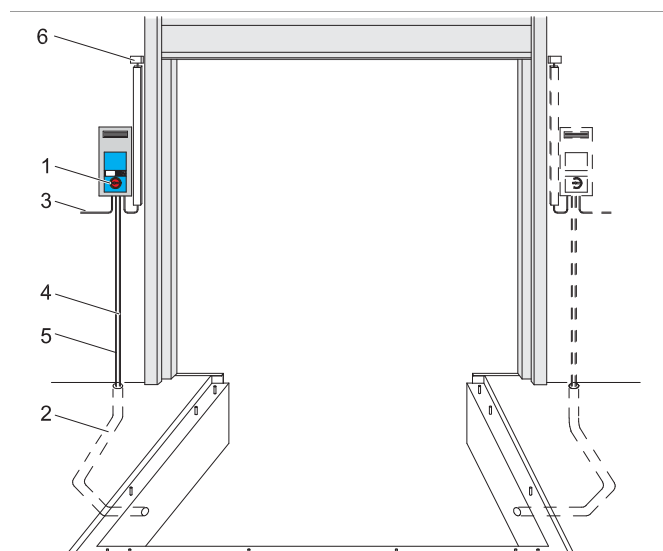
4. CEN Performance

4.1 Safety according to the European Standard EN 1398

- Emergency Stop Function.
 - Safety valves block lowering movement after max. 6% of the nominal length of the leveler.
 - Two lift cylinders make sure the leveler stops in a horizontal position.
- Free floating position.
- Platform torsion. Lateral deflection of at least 3% of nominal width.
- Toe guards cover gap between platform and pit in leveler's highest position.
- Working range gradient max. 12,5% ($\sim 7^\circ$).
- Warning stripes on side plates and on frame (black/yellow).

5. Building and space requirements

5.1 Electrical preparations



1	Control unit (included in the delivery)	
2	Conduit for wiring internal diameter 70, angles <45° (by others)	
3	Mains supply:	3/N/PE AC 50 Hz 400V 3-phase, 230V 3-phase
	Mains fuse:	D0 10 A gL
	Motor power:	1,5 kW
4	Cable:	7 x 0,75 mm ²
5	Motor cable:	4 x 1,5 mm ²
6	Optional safety switch on sectional door to disable leveler when door is closed*	

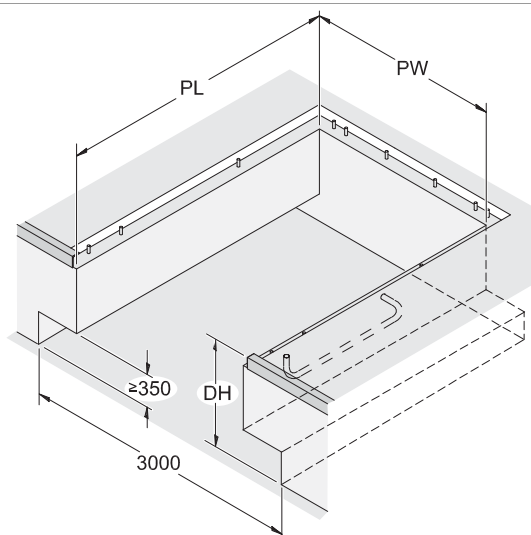
*Non standard

5.2 Pit preparations

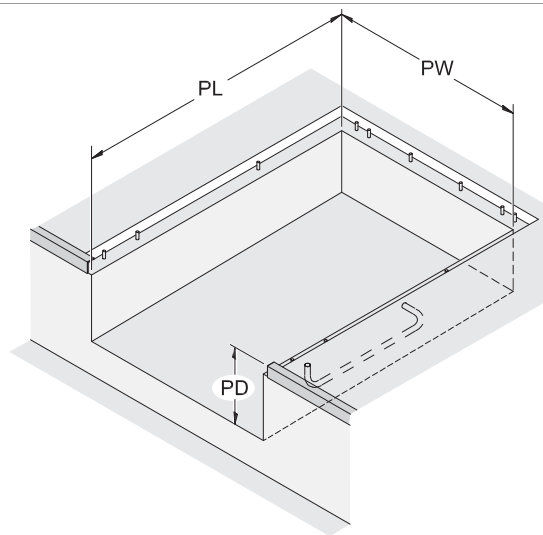
This section illustrates the required pit preparations for each frame type for the ASSA ABLOY DL6120T teledock.

5.2.1 T - frame + T-frame 200

With tail lift recess

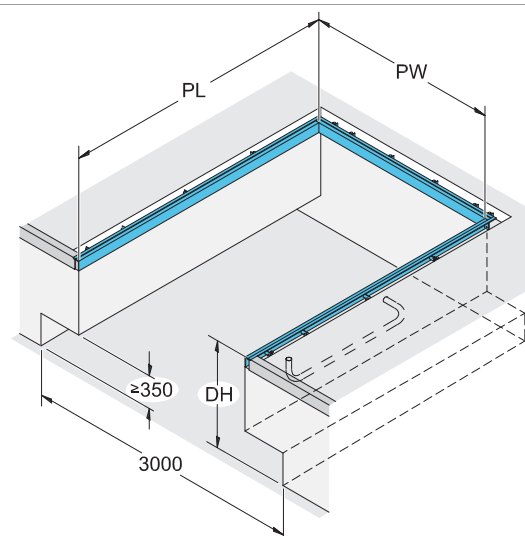


Without tail lift recess

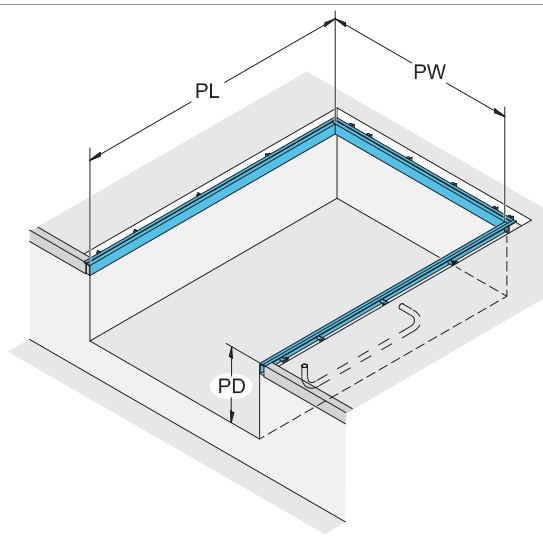


5.2.2 W - frame

With tail lift recess

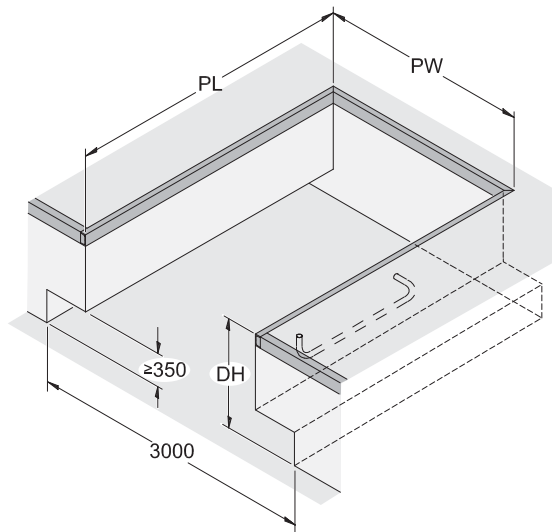


Without tail lift recess

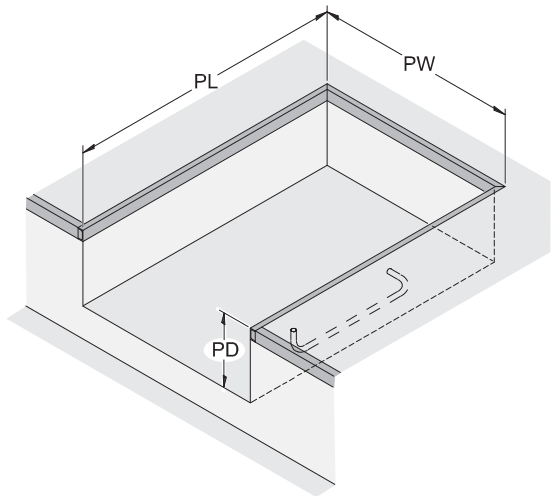


5.2.3 F - frame

With tail lift recess

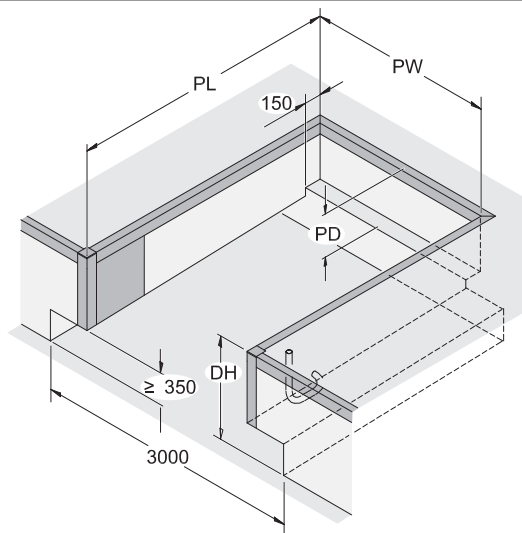


Without tail lift recess

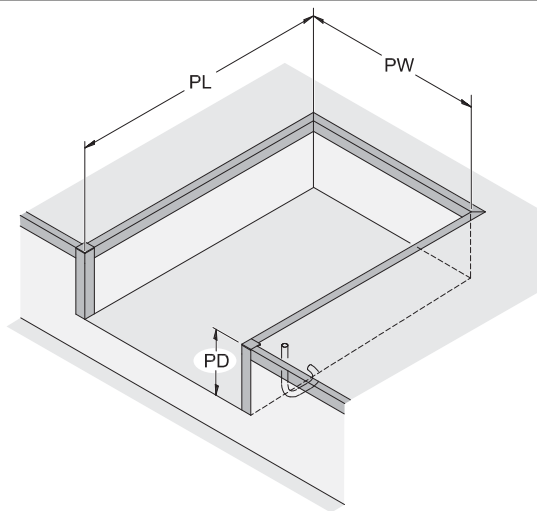


5.2.4 P - frame

With tail lift recess

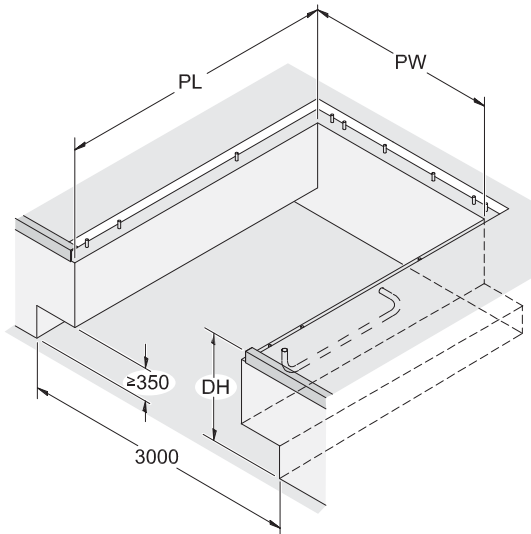


Without tail lift recess

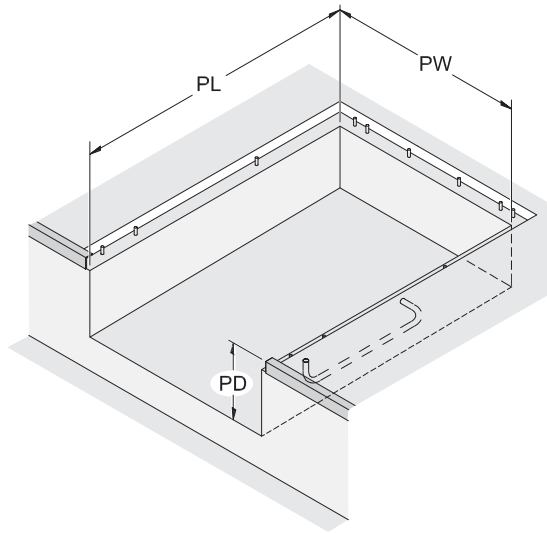


5.2.5 B - frame

With tail lift recess



Without tail lift recess



6. Service

Preventive Maintenance Program and Modernization Services

As your entrances are part of your business flow, there's every reason to keep them working well. ASSA ABLOY Entrance Systems offers you a maintenance and modernization expertise to rely on. Our Maintenance Programs and Modernization Services are backed by a extensive expertise for all types of industrial door and docking systems, independent of brand. At your disposal is a team of dedicated expert technicians, proven through decades of maintenance, service and satisfied customers.

Preventive Maintenance Programs

Minimizing lost time, lost energy and unexpected hassle is our team's constant objective. Our service organization can support you 24/7 in maintaining all industrial door and docking systems, independent of brand. If you want to be one step ahead of break-downs, explore our portfolio of Pro-Active Care plans. Naturally, we also offer entrance upgrades to suit your specific wishes and business needs.

Pro-Active Care - Maintenance plans to fit your business

Regular maintenance can extend the lifetime of your equipment and help prevent unexpected problems. Our technician arrives on-site equipped with the knowledge and tools to service all automatic entrances, independent of brand.

• Pro-Active Bronze

The base on which all Pro-Active Plans are built provides the security of knowing that your equipment is regularly inspected and certified for safety, as well as performing optimally. It includes a number of planned on-site visits depending on your needs. Any unplanned service calls required during the term of the contract (including labor, travel and parts) are billed at special Pro-Active Care prices.

• Pro-Active Silver

This plan provides all the benefits of Pro-Active Bronze with the added advantage of labor and travel being included for service calls during regular business hours. The only additional charge would be for any parts that may be needed throughout the term of the contract.

• Pro-Active Gold

This plan provides the ultimate protection for your automatic entrance investment. It includes all the benefits of Pro-Active Silver, plus replacement of any parts required during an unplanned repair or planned maintenance visit. Pro-Active Gold is an excellent way to budget your automatic door expenses annually.

• Pro-Active Tailor-Flex

Our most flexible maintenance and service offering. The Pro-Active Care plan is designed by you, our customer. The plan allows you to balance your maintenance expenses against your real-world budget and presents the option to add or delete a number of maintenance elements to suit your budget goals, while meeting your overall performance and safety needs.

Modernization

Your entrances are a long-term investment, from which you always want the best. Products develop over time, so do regulations and your business. Let us help you increase energy savings and meet today's standards. We provide advice and modernization kits for outdated installations, ensuring your investment meet requirements and performs optimally for many more years to come.

Re-Active Service		Pro-Active Care				
		Pro-Active Bronze	Pro-Active Silver	Pro-Active Gold	Pro-Active Tailor Flex	
		○	○	○	●	Other customized requests such as Response Time, Performance InfoPack and Advanced User Training
		○	○	●	○	Replacement of worn parts according to preventive Consumable Exchange Program
		○	○	●	○	Replacement of spare parts on breakdowns
		○	●	●	○	Travel and labor for additional call-out visits
		●	●	●	●	Preventive maintenance visits 1-4 times per year
		●	●	●	●	Travel and labor for preventive maintenance visits
		●	●	●	●	Response time and priority on call-outs <24h
		●	●	●	●	Preventive planned maintenance that meets the most demanding standards in the market
	●	●	●	●	●	Safety and quality checks according to applicable regulations and norms. Documentation of test results provided
●	●	●	●	●	●	Documentation of equipment status, assessment and service provided, all generated on site
●	●	●	●	●	●	Highly trained professional technicians with extensive knowledge, state-of-the-art tools and the right spare parts*
●	●	●	●	●	●	Dedicated Professional Customer Care Hotline
Corrective	SafetyCheck	Pro-Active Bronze	Pro-Active Silver	Pro-Active Gold	Pro-Active Tailor Flex	

● = Included as standard
○ = Available at special prices
* Well-stocked service vehicles with genuine and new spare parts

Index

Numerics

2 retracting tongues	7
950 Docking DLA TD	11
950 Docking DLSA TD	11
950 Docking LA TD	11
950 Docking LSA TD	11

A

Aluminium lip	16
Aluminium telescopic lip	7
Application	6
ASSA ABLOY DE6090DI Dock-IN	
Autodock	14
ASSA ABLOY DE6090DL Dock light	
Heavy Duty LED	13
ASSA ABLOY DE6090E Eye	13
ASSA ABLOY DE6090TLS Traffic light	
system	13
ASSA ABLOY DE6090WC Wheel chock	
13	
Available Options	14
Axle load	15

B

B - box-frame	10
B - frame	23
Bevelled lip	7
Buffers	12
Building and space requirements ...	20

C

CEN Performance	19
Colors	8
Control units	18
Copyright and Disclaimer Notice	2

D

Description	6
Dimensions	17, 18
Dock-IN Red	14
Dock-IN White	14
Dock-IN White & Red	14
Docking control systems	11
Dynamic load	15

E

EBF	13
EBH	12
Electrical preparations	20
EPDM seal	8
Equipment	12
Ergonomic lip	7
Example	15

F

F - flat frame for welding	9
F - frame	22
Features	3
Frames - connection to building	9
Free space under lip	16
Front cover curtain	8
Functions	18

G

General	6
---------------	---

H

Hot galvanising	8
-----------------------	---

L

Lip material	7
Lip shapes	7
Lip type	7
Load capacity according to EN 1398	15

M

Mode of operation	6
-------------------------	---

N

Nominal width	16
---------------------	----

O

Options	6
Overview	6

P

P - frame	22
P - pit frame for welding	10
Paint classes	8
Painting	8
Parking guides	13
Performance	3
Pit preparations	21
Platform	8
Platform tear-plate thickness	8
Platform thickness	17

R

Rated load	15
RB	12
RB with steel construction	12
RB with steel construction and steel	
front plate	12
RB with steel front and top plate	12
RB with steel front plate	12
RS	12

S

Safety according to the European	
Standard EN 1398	19
Select the leveler length	15
Select the load capacity	15
Selection guide	15
Service	24
Slip protection / noise reduction	8
Specifications	17
Standard	6
Standard lip	7
Standard paint class	8
Standard telescopic lip	7
Steel lip	16
Steel spring buffer 600	13
Steel spring buffer 800	13
Steel telescopic lip	7
Surface	8

T

T - 200 leveler frame for embedding in concrete9

T - frame + T-frame 200 21

T - leveler frame for embedding in concrete9

Tapered telescopic lip7

Technical facts3

Telescopic Lip7

The calculation 15

W

W - frame21

W - leveler frame for welding9

ASSA ABLOY Entrance Systems is a leading supplier of entrance automation solutions for the efficient flow of goods and people. Building on the long-term success of the Besam, Crawford, Albany and Megadoor brands, we offer our solutions under the ASSA ABLOY brand. Our products and services are dedicated to satisfying end-user needs for safe, secure, convenient and sustainable operations.

ASSA ABLOY Entrance Systems is a division of ASSA ABLOY.

ASSA ABLOY

assaabloyentrance.com



ASSA ABLOY Entrance Systems

assaabloyentrance.com